

| Cypress Police Department - Arrests (Adult) | | | | | | | | | | | 2014/2013 | 2014-2010 | Average |
|--|--------------|--------------|--------------|--------------|------------|------------|--------------|--------------|--------------|------------|------------------|-----------------|-------------------|
| <i>As reported for the Department of Justice: Monthly Arrest & Citation Register</i> | | | | | | | | | | | Yr to Yr | Five Year | Arrests |
| ADULT ARRESTS | 2005 | 2006 | 2007 | 2008 | 2009 | 2010 | 2011 | 2012 | 2013 | 2014 | % Trend | Trend | Per Month |
| January | 111 | 111 | 133 | 73 | 79 | 82 | 94 | 79 | 108 | 103 | -5% | 26% | 95 |
| February | 116 | 124 | 129 | 100 | 88 | 63 | 75 | 83 | 90 | 78 | -13% | 24% | 95 |
| March | 130 | 140 | 113 | 93 | 77 | 71 | 94 | 112 | 126 | 74 | -41% | 4% | 102 |
| April | 145 | 130 | 109 | 77 | 98 | 71 | 94 | 99 | 111 | 87 | -22% | 23% | 100 |
| May | 120 | 150 | 122 | 114 | 73 | 85 | 106 | 96 | 84 | 64 | -24% | -25% | 103 |
| June | 145 | 109 | 124 | 131 | 62 | 58 | 80 | 103 | 73 | 66 | -10% | 14% | 98 |
| July | 153 | 116 | 98 | 110 | 79 | 76 | 90 | 112 | 70 | 59 | -16% | -22% | 98 |
| August | 141 | 121 | 73 | 89 | 61 | 78 | 90 | 95 | 97 | 76 | -22% | -3% | 92 |
| September | 154 | 140 | 113 | 78 | 81 | 79 | 99 | 115 | 76 | 60 | -21% | -24% | 98 |
| October | 140 | 135 | 90 | 86 | 88 | 83 | 65 | 80 | 60 | 74 | 23% | -11% | 90 |
| November | 105 | 131 | 98 | 65 | 67 | 61 | 74 | 88 | 61 | 47 | -23% | -23% | 78 |
| December | 109 | 134 | 90 | 75 | 65 | 78 | 79 | 93 | 54 | 42 | -22% | -46% | 81 |
| Total Adult Arrests | 1,569 | 1,541 | 1,292 | 1,091 | 918 | 885 | 1,040 | 1,155 | 1,010 | 830 | -18% | -6% | 1,133 |
| JUVENILE ARRESTS | 2005 | 2006 | 2007 | 2008 | 2009 | 2010 | 2011 | 2012 | 2013 | 2014 | 2014/2013 %Trend | Five Year Trend | Average Per Month |
| January | 13 | 21 | 14 | 5 | 1 | 2 | 7 | 3 | 4 | 0 | -100% | -100% | 7 |
| February | 23 | 8 | 15 | 5 | 6 | 4 | 9 | 6 | 6 | 1 | -83% | -75% | 8 |
| March | 13 | 14 | 2 | 2 | 5 | 6 | 7 | 9 | 3 | 3 | 0% | -50% | 6 |
| April | 20 | 16 | 4 | 6 | 10 | 6 | 7 | 7 | 6 | 1 | -83% | -83% | 8 |
| May | 13 | 14 | 9 | 8 | 2 | 11 | 8 | 3 | 5 | 2 | -60% | -82% | 8 |
| June | 25 | 17 | 7 | 3 | 5 | 8 | 4 | 1 | 4 | 0 | -100% | -100% | 7 |
| July | 6 | 9 | 8 | 3 | 1 | 7 | 5 | 5 | 5 | 0 | -100% | -100% | 5 |
| August | 32 | 31 | 7 | 2 | 4 | 0 | 3 | 5 | 3 | 2 | -33% | *N/C | 8 |
| September | 9 | 10 | 15 | 2 | 2 | 4 | 6 | 10 | 2 | 3 | 50% | -25% | 6 |
| October | 16 | 20 | 5 | 4 | 2 | 6 | 2 | 4 | 3 | 3 | 0% | -50% | 6 |
| November | 19 | 13 | 9 | 6 | 2 | 6 | 4 | 1 | 1 | 1 | 0% | -83% | 6 |
| December | 5 | 9 | 9 | 0 | 1 | 6 | 5 | 9 | 2 | 3 | 50% | -50% | 4 |
| Total Juvenile Arrests | 194 | 182 | 104 | 46 | 41 | 66 | 67 | 63 | 44 | 19 | -57% | -71% | 83 |
| TOTAL ARRESTS | 2005 | 2006 | 2007 | 2008 | 2009 | 2010 | 2011 | 2012 | 2013 | 2014 | 2014/2013 %Trend | Five Year Trend | Average Per Month |
| January | 124 | 132 | 147 | 78 | 80 | 84 | 101 | 82 | 112 | 103 | -8% | 23% | 104 |
| February | 139 | 132 | 144 | 105 | 94 | 67 | 84 | 89 | 96 | 79 | -18% | 18% | 103 |
| March | 143 | 154 | 115 | 95 | 82 | 77 | 101 | 121 | 129 | 77 | -40% | 0% | 109 |
| April | 165 | 146 | 113 | 83 | 108 | 77 | 101 | 106 | 117 | 88 | -25% | 14% | 110 |
| May | 133 | 164 | 131 | 122 | 75 | 96 | 114 | 99 | 89 | 66 | -26% | -31% | 109 |
| June | 170 | 126 | 131 | 134 | 67 | 66 | 84 | 104 | 77 | 66 | -14% | 0% | 103 |
| July | 159 | 125 | 106 | 113 | 80 | 83 | 95 | 117 | 75 | 59 | -21% | -29% | 101 |
| August | 173 | 152 | 80 | 91 | 65 | 78 | 93 | 100 | 100 | 78 | -22% | 0% | 101 |
| September | 163 | 150 | 128 | 80 | 83 | 83 | 105 | 125 | 78 | 63 | -19% | -24% | 106 |
| October | 156 | 155 | 95 | 90 | 90 | 89 | 67 | 84 | 63 | 77 | 22% | -13% | 97 |
| November | 124 | 144 | 107 | 71 | 69 | 67 | 78 | 89 | 62 | 48 | -23% | -28% | 86 |
| December | 114 | 143 | 99 | 75 | 66 | 84 | 84 | 102 | 56 | 45 | -20% | -46% | 87 |
| ANNUAL TOTAL | 1,763 | 1,723 | 1,396 | 1,137 | 959 | 951 | 1,107 | 1,218 | 1,054 | 849 | -19% | -11% | 1,216 |

*N/C represents increases from "0" which are mathematically "Non-Calculable"

| Cypress Police Department - Arrests by Type (2014) | | | | | | | | | | | 2014/2010 | | |
|--|--------------|--------------|--------------|--------------|------------|------------|--------------|--------------|--------------|------------|-------------|-------------|--------------|
| Felony Arrests | | | | | | | | | | | 2014/2013 | Five Year | Average |
| | 2005 | 2006 | 2007 | 2008 | 2009 | 2010 | 2011 | 2012 | 2013 | 2014 | %Arrest | Trend | Per Month |
| January | 47 | 41 | 53 | 35 | 36 | 24 | 45 | 29 | 54 | 49 | -9% | 104% | 41 |
| February | 42 | 51 | 62 | 45 | 33 | 17 | 25 | 39 | 42 | 30 | -29% | 76% | 39 |
| March | 55 | 57 | 49 | 38 | 31 | 23 | 41 | 42 | 42 | 37 | -12% | 61% | 41 |
| April | 42 | 49 | 41 | 34 | 35 | 23 | 36 | 39 | 59 | 40 | -32% | 74% | 39 |
| May | 44 | 71 | 60 | 59 | 25 | 24 | 38 | 37 | 37 | 28 | -24% | 17% | 44 |
| June | 50 | 47 | 62 | 48 | 19 | 16 | 25 | 45 | 31 | 34 | 10% | 113% | 39 |
| July | 67 | 49 | 40 | 50 | 30 | 26 | 37 | 46 | 33 | 28 | -15% | 8% | 41 |
| August | 65 | 55 | 33 | 16 | 23 | 25 | 40 | 38 | 43 | 41 | -5% | 64% | 36 |
| September | 63 | 64 | 46 | 30 | 29 | 25 | 46 | 53 | 31 | 28 | -10% | 12% | 40 |
| October | 47 | 60 | 34 | 36 | 24 | 42 | 15 | 34 | 20 | 40 | 100% | -5% | 35 |
| November | 42 | 50 | 39 | 27 | 17 | 27 | 27 | 38 | 24 | 11 | -54% | -59% | 30 |
| December | 40 | 52 | 36 | 29 | 16 | 29 | 41 | 48 | 16 | 15 | -6% | -48% | 32 |
| Total Felony Arrests | 604 | 646 | 555 | 447 | 318 | 301 | 416 | 488 | 432 | 381 | -12% | 27% | 459 |
| Misdemeanor Arrests | | | | | | | | | | | 2014/2013 | Five Year | Average |
| | 2005 | 2006 | 2007 | 2008 | 2009 | 2010 | 2011 | 2012 | 2013 | 2014 | %Arrest | Trend | Per Month |
| January | 77 | 91 | 94 | 43 | 44 | 60 | 56 | 53 | 58 | 54 | -7% | -10% | 61 |
| February | 97 | 81 | 82 | 60 | 61 | 50 | 59 | 50 | 54 | 49 | -9% | -2% | 64 |
| March | 88 | 97 | 66 | 57 | 51 | 54 | 60 | 79 | 87 | 40 | -54% | -26% | 67 |
| April | 123 | 97 | 72 | 49 | 73 | 54 | 65 | 67 | 58 | 48 | -17% | -11% | 69 |
| May | 89 | 93 | 71 | 63 | 50 | 72 | 76 | 62 | 52 | 38 | -27% | -47% | 66 |
| June | 120 | 79 | 69 | 86 | 48 | 50 | 59 | 59 | 46 | 32 | -30% | -36% | 67 |
| July | 92 | 76 | 66 | 63 | 50 | 57 | 58 | 71 | 42 | 31 | -26% | -46% | 61 |
| August | 108 | 97 | 47 | 75 | 42 | 53 | 53 | 62 | 57 | 37 | -35% | -30% | 64 |
| September | 100 | 85 | 82 | 50 | 54 | 58 | 59 | 72 | 47 | 35 | -26% | -40% | 63 |
| October | 109 | 96 | 61 | 54 | 66 | 47 | 52 | 50 | 43 | 37 | -14% | -21% | 61 |
| November | 82 | 94 | 68 | 44 | 52 | 40 | 51 | 51 | 38 | 37 | -3% | -8% | 55 |
| December | 74 | 91 | 63 | 55 | 50 | 55 | 43 | 54 | 40 | 30 | -25% | -45% | 55 |
| Total Misdemeanor Arrests | 1,159 | 1,077 | 841 | 699 | 641 | 650 | 691 | 730 | 622 | 468 | -25% | -28% | 758 |
| ANNUAL TOTAL ARRESTS | 1,763 | 1,723 | 1,396 | 1,146 | 959 | 951 | 1,107 | 1,218 | 1,054 | 849 | -19% | -11% | 1,217 |

| Cypress Police Department Arrests - 2010 | | | | | |
|---|---------------|---------------|------------------|---------------|------------------|
| Total Arrest by Gender | | | | | |
| | Adults | | Juveniles | | |
| | Male | Female | Male | Female | |
| January | 69 | 13 | 1 | 1 | |
| February | 48 | 15 | 4 | 0 | |
| March | 50 | 21 | 6 | 0 | |
| April | 54 | 17 | 4 | 2 | |
| May | 64 | 21 | 7 | 4 | |
| June | 44 | 14 | 5 | 3 | |
| July | 55 | 21 | 4 | 3 | |
| August | 62 | 16 | 0 | 0 | |
| September | 54 | 25 | 4 | 0 | |
| October | 61 | 22 | 5 | 1 | |
| November | 46 | 15 | 6 | 0 | |
| December | 62 | 16 | 5 | 1 | |
| ANNUAL TOTAL | 669 | 216 | 51 | 15 | Total 951 |

| Cypress Police Department Arrests - 2011 | | | | | |
|---|---------------|---------------|------------------|---------------|--------------------|
| Total Arrest by Gender | | | | | |
| | Adults | | Juveniles | | |
| | Male | Female | Male | Female | |
| January | 75 | 19 | 5 | 2 | |
| February | 56 | 19 | 6 | 3 | |
| March | 61 | 33 | 6 | 1 | |
| April | 74 | 20 | 7 | 0 | |
| May | 84 | 22 | 8 | 0 | |
| June | 62 | 18 | 4 | 0 | |
| July | 68 | 22 | 5 | 0 | |
| August | 70 | 20 | 3 | 0 | |
| September | 66 | 33 | 5 | 1 | |
| October | 49 | 16 | 0 | 2 | |
| November | 50 | 24 | 2 | 2 | |
| December | 53 | 26 | 4 | 1 | |
| ANNUAL TOTAL | 768 | 272 | 55 | 12 | Total 1,107 |

| Cypress Police Department Arrests - 2012 | | | | | |
|---|---------------|---------------|------------------|---------------|--------------------|
| Total Arrest by Gender | | | | | |
| | Adults | | Juveniles | | |
| | Male | Female | Male | Female | |
| January | 59 | 20 | 3 | 0 | |
| February | 62 | 21 | 5 | 1 | |
| March | 86 | 26 | 6 | 3 | |
| April | 81 | 18 | 5 | 2 | |
| May | 67 | 29 | 3 | 0 | |
| June | 80 | 23 | 1 | 0 | |
| July | 86 | 26 | 4 | 1 | |
| August | 78 | 17 | 3 | 2 | |
| September | 86 | 29 | 6 | 4 | |
| October | 64 | 16 | 2 | 2 | |
| November | 62 | 26 | 1 | 0 | |
| December | 73 | 20 | 6 | 3 | |
| ANNUAL TOTAL | 884 | 271 | 45 | 18 | Total 1,218 |

| Cypress Police Department Arrests - 2013 | | | | | |
|---|---------------|---------------|------------------|---------------|--------------------|
| Total Arrest by Gender | | | | | |
| | Adults | | Juveniles | | |
| | Male | Female | Male | Female | |
| January | 81 | 27 | 4 | 0 | |
| February | 77 | 13 | 5 | 1 | |
| March | 103 | 23 | 2 | 1 | |
| April | 85 | 26 | 2 | 4 | |
| May | 59 | 25 | 5 | 0 | |
| June | 46 | 27 | 3 | 1 | |
| July | 55 | 15 | 5 | 0 | |
| August | 75 | 22 | 2 | 1 | |
| September | 59 | 17 | 2 | 0 | |
| October | 48 | 12 | 2 | 1 | |
| November | 48 | 13 | 1 | 0 | |
| December | 38 | 16 | 0 | 2 | |
| ANNUAL TOTAL | 774 | 236 | 33 | 11 | Total 1,054 |

| Cypress Police Department Arrests - 2014 | | | | | |
|---|---------------|---------------|------------------|---------------|--------------|
| Total Arrest by Gender | | | | | |
| | Adults | | Juveniles | | |
| | Male | Female | Male | Female | |
| January | 77 | 26 | 0 | 0 | |
| February | 55 | 23 | 0 | 1 | |
| March | 61 | 13 | 2 | 1 | |
| April | 66 | 21 | 1 | 0 | |
| May | 44 | 20 | 2 | 0 | |
| June | 38 | 28 | 0 | 0 | |
| July | 47 | 12 | 0 | 0 | |
| August | 61 | 15 | 2 | 0 | |
| September | 45 | 15 | 3 | 0 | |
| October | 64 | 10 | 2 | 1 | |
| November | 39 | 8 | 1 | 0 | |
| December | 28 | 14 | 3 | 0 | Total |
| ANNUAL TOTAL | 625 | 205 | 16 | 3 | 849 |

| Cypress Police Department Arrest - (2010) | | | |
|--|---------------|---------------|----------------------|
| Part 1 & 2 Classification | | | |
| | Part 1 | Part 2 | Total Arrests |
| January | 20 | 64 | 84 |
| February | 10 | 57 | 67 |
| March | 16 | 61 | 77 |
| April | 18 | 59 | 77 |
| May | 23 | 73 | 96 |
| June | 15 | 51 | 66 |
| July | 17 | 66 | 83 |
| August | 15 | 63 | 78 |
| September | 18 | 65 | 83 |
| October | 15 | 74 | 89 |
| November | 23 | 44 | 67 |
| December | 19 | 65 | 84 |
| Annual Total | 209 | 742 | 951 |

| Cypress Police Department Arrest - (2011) | | | |
|--|---------------|---------------|----------------------|
| Part 1 & 2 Classification | | | |
| | Part 1 | Part 2 | Total Arrests |
| January | 25 | 76 | 101 |
| February | 17 | 67 | 84 |
| March | 16 | 85 | 101 |
| April | 23 | 78 | 101 |
| May | 33 | 81 | 114 |
| June | 22 | 62 | 84 |
| July | 15 | 80 | 95 |
| August | 18 | 75 | 93 |
| September | 17 | 88 | 105 |
| October | 5 | 62 | 67 |
| November | 16 | 62 | 78 |
| December | 13 | 71 | 84 |
| Annual Total | 220 | 887 | 1,107 |

| Cypress Police Department Arrest - (2012) | | | |
|--|---------------|---------------|----------------------|
| Part 1 & 2 Classification | | | |
| | Part 1 | Part 2 | Total Arrests |
| January | 9 | 73 | 82 |
| February | 27 | 62 | 89 |
| March | 21 | 100 | 121 |
| April | 17 | 89 | 106 |
| May | 12 | 87 | 99 |
| June | 12 | 92 | 104 |
| July | 20 | 97 | 117 |
| August | 5 | 95 | 100 |
| September | 15 | 110 | 125 |
| October | 15 | 69 | 84 |
| November | 21 | 68 | 89 |
| December | 19 | 83 | 102 |
| Annual Total | 193 | 1025 | 1,218 |

| Cypress Police Department Arrest - (2013) | | | |
|--|------------|------------|---------------|
| Part 1 & 2 Classification | | | |
| | Part 1 | Part 2 | Total Arrests |
| January | 13 | 99 | 112 |
| February | 11 | 85 | 96 |
| March | 6 | 123 | 129 |
| April | 21 | 96 | 117 |
| May | 12 | 77 | 89 |
| June | 9 | 68 | 77 |
| July | 16 | 59 | 75 |
| August | 11 | 89 | 100 |
| September | 13 | 65 | 78 |
| October | 16 | 47 | 63 |
| November | 10 | 52 | 62 |
| December | 12 | 44 | 56 |
| Annual Total | 150 | 904 | 1,054 |

| Cypress Police Department Arrest - (2014) | | | |
|--|------------|------------|---------------|
| Part 1 & 2 Classification | | | |
| | Part 1 | Part 2 | Total Arrests |
| January | 19 | 84 | 103 |
| February | 8 | 71 | 79 |
| March | 19 | 58 | 77 |
| April | 24 | 64 | 88 |
| May | 6 | 60 | 66 |
| June | 11 | 55 | 66 |
| July | 6 | 53 | 59 |
| August | 17 | 61 | 78 |
| September | 14 | 49 | 63 |
| October | 10 | 67 | 77 |
| November | 11 | 37 | 48 |
| December | 15 | 30 | 45 |
| Annual Total | 160 | 689 | 849 |

Cypress Police Department Total Prisoners - (2010)
As reported by the Jail Facilities Sergeant

| | Total Prisoners | Booked OCJ |
|---------------------|-----------------|------------|
| January | 65 | 35 |
| February | 57 | 30 |
| March | 44 | 27 |
| April | 55 | 35 |
| May | 68 | 38 |
| June | 45 | 27 |
| July | 60 | 33 |
| August | 54 | 36 |
| September | 64 | 24 |
| October | 73 | 53 |
| November | 35 | 20 |
| December | 61 | 35 |
| Annual Total | 681 | 393 |

Cypress Police Department Meals Report - (2010)
As reported by the Jail Facilities Sergeant

| | Meals Breakfast | Meals Lunch | Meals Dinner | |
|---------------------|-----------------|-------------|--------------|--------------|
| January | 0 | 4 | 5 | |
| February | 0 | 4 | 3 | |
| March | 1 | 1 | 3 | |
| April | 0 | 2 | 6 | |
| May | 2 | 6 | 6 | |
| June | 0 | 4 | 7 | |
| July | 0 | 8 | 1 | |
| August | 0 | 8 | 5 | |
| September | 3 | 3 | 5 | |
| October | 4 | 5 | 8 | |
| November | 0 | 2 | 1 | |
| December | 0 | 4 | 2 | Total |
| Annual Total | 10 | 51 | 52 | 113 |

Cypress Police Department Total Prisoners - (2011)
As reported by the Jail Facilities Sergeant

| | Total Prisoners | Booked OCJ |
|---------------------|-----------------|------------|
| January | 82 | 48 |
| February | 62 | 35 |
| March | 80 | 42 |
| April | 91 | 47 |
| May | 91 | 54 |
| June | 50 | 26 |
| July | 72 | 36 |
| August | 70 | 38 |
| September | 67 | 38 |
| October | 60 | 33 |
| November | 42 | 26 |
| December | 58 | 43 |
| Annual Total | 825 | 466 |

Cypress Police Department Meals Report - (2011)
As reported by the Jail Facilities Sergeant

| | Meals Breakfast | Meals Lunch | Meals Dinner | |
|---------------------|--------------------|----------------|-----------------|--------------|
| January | 1 | 3 | 2 | |
| February | 1 | 2 | 2 | |
| March | 2 | 5 | 7 | |
| April | 0 | 5 | 6 | |
| May | 5 | 7 | 0 | |
| June | 2 | 0 | 1 | |
| July | 4 | 5 | 0 | |
| August | 4 | 3 | 4 | |
| September | 3 | 4 | 4 | |
| October | 0 | 0 | 0 | |
| November | 0 | 3 | 2 | |
| December | 0 | 10 | 8 | Total |
| Annual Total | 22 | 47 | 36 | 105 |

Cypress Police Department Total Prisoners - (2012)
As reported by the Jail Facilities Sergeant

| | Total Prisoners | Booked OCJ |
|---------------------|--------------------|---------------|
| January | 40 | 21 |
| February | 45 | 32 |
| March | 77 | 57 |
| April | 73 | 51 |
| May | 61 | 43 |
| June | 65 | 53 |
| July | 68 | 42 |
| August | 72 | 54 |
| September | 84 | 55 |
| October | 45 | 30 |
| November | 51 | 39 |
| December | 58 | 40 |
| Annual Total | 739 | 517 |

Cypress Police Department Meals Report - (2012)
As reported by the Jail Facilities Sergeant

| | Meals Breakfast | Meals Lunch | Meals Dinner | |
|---------------------|--------------------|----------------|-----------------|--------------|
| January | 0 | 0 | 2 | |
| February | 2 | 2 | 1 | |
| March | 4 | 1 | 3 | |
| April | 0 | 1 | 2 | |
| May | 4 | 3 | 0 | |
| June | 0 | 0 | 3 | |
| July | 2 | 1 | 2 | |
| August | 0 | 2 | 0 | |
| September | 4 | 1 | 1 | |
| October | 0 | 0 | 0 | |
| November | 0 | 2 | 3 | |
| December | 0 | 4 | 0 | Total |
| Annual Total | 16 | 17 | 17 | 50 |

Cypress Police Department Total Prisoners - (2013)
As reported by the Jail Facilities Sergeant

| | Total Prisoners | Booked OCJ |
|---------------------|-----------------|------------|
| January | 73 | 52 |
| February | 64 | 36 |
| March | 92 | 55 |
| April | 62 | 45 |
| May | 53 | 30 |
| June | 42 | 23 |
| July | 39 | 26 |
| August | 55 | 36 |
| September | 41 | 18 |
| October | 30 | 10 |
| November | 33 | 19 |
| December | 12 | 4 |
| Annual Total | 596 | 354 |

Cypress Police Department Meals Report - (2013)
As reported by the Jail Facilities Sergeant

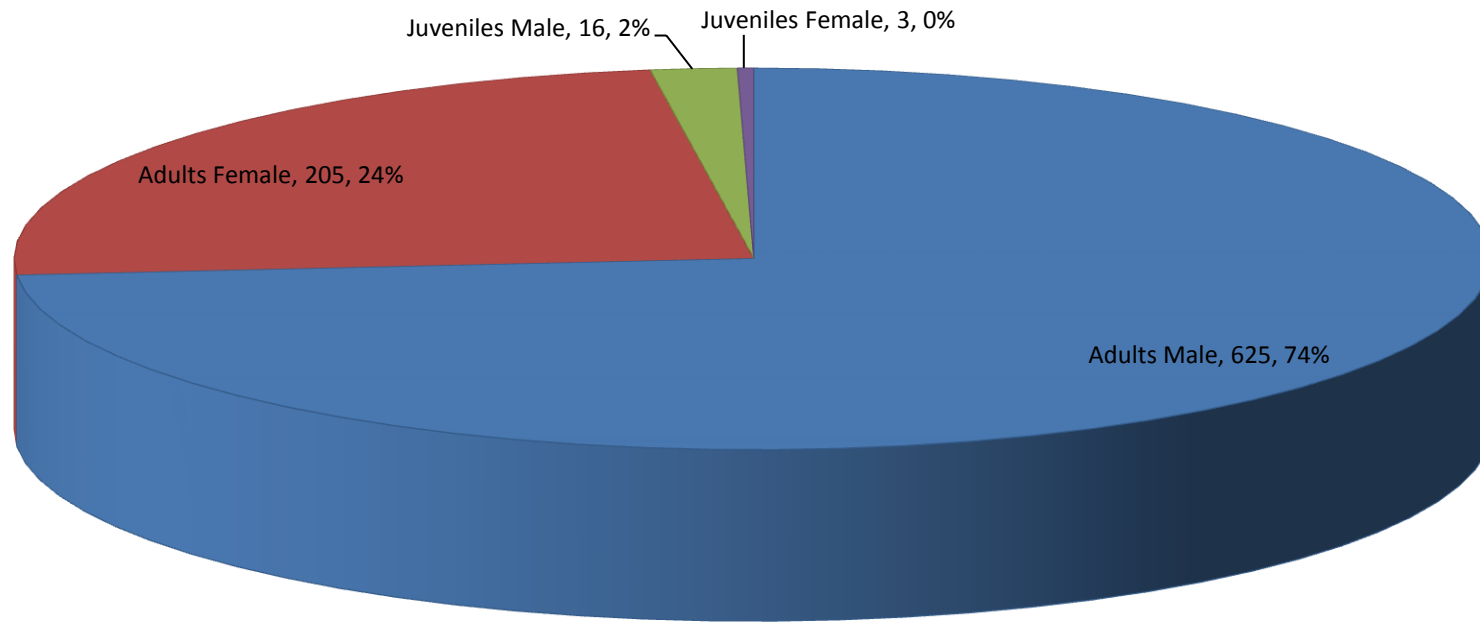
| | Meals Breakfast | Meals Lunch | Meals Dinner | |
|---------------------|-----------------|-------------|--------------|--------------|
| January | 2 | 1 | 0 | |
| February | 2 | 1 | 2 | |
| March | 2 | 9 | 6 | |
| April | 0 | 6 | 2 | |
| May | 0 | 2 | 0 | |
| June | 0 | 2 | 0 | |
| July | 2 | 0 | 0 | |
| August | 0 | 3 | 0 | |
| September | 0 | 2 | 0 | |
| October | 0 | 0 | 2 | |
| November | 1 | 1 | 0 | |
| December | 0 | 0 | 0 | Total |
| Annual Total | 9 | 27 | 12 | 48 |

Cypress Police Department Total Prisoners - (2014)
As reported by the Jail Facilities Sergeant

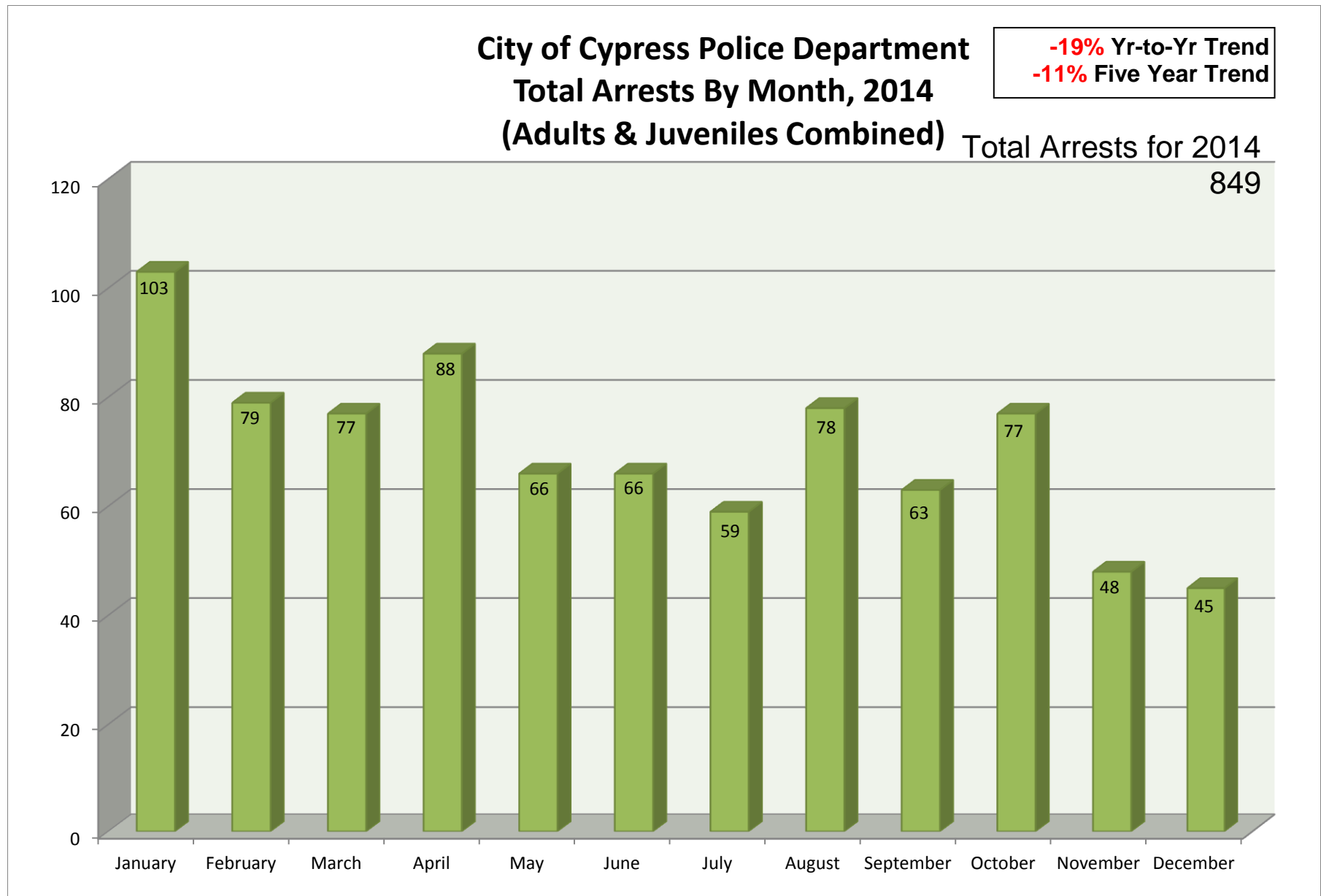
| | Total Prisoners | Booked OCJ |
|---------------------|-----------------|------------|
| January | 55 | 36 |
| February | 27 | 20 |
| March | 43 | 32 |
| April | 47 | 40 |
| May | 41 | 24 |
| June | 33 | 26 |
| July | 24 | 14 |
| August | 42 | 33 |
| September | 41 | 24 |
| October | 46 | 30 |
| November | 27 | 16 |
| December | 15 | 6 |
| Annual Total | 441 | 301 |

| Cypress Police Department Meals Report - (2014) | | | | |
|--|-----------|-----------|----------|--------------|
| <i>As reported by the Jail Facilities Sergeant</i> | | | | |
| | Meals | Meals | Meals | |
| | Breakfast | Lunch | Dinner | |
| January | 0 | 3 | 0 | |
| February | 1 | 0 | 0 | |
| March | 0 | 2 | 1 | |
| April | 0 | 1 | 5 | |
| May | 0 | 4 | 0 | |
| June | 2 | 0 | 0 | |
| July | 0 | 2 | 0 | |
| August | 0 | 1 | 2 | |
| September | 0 | 3 | 0 | |
| October | 1 | 1 | 0 | |
| November | 1 | 0 | 0 | |
| December | 0 | 0 | 0 | Total |
| Annual Total | 5 | 17 | 8 | 30 |

City of Cypress Police Department Total Arrests By Gender, 2014 (Male/Female | Adults/Juveniles)



Total Arrests for 2014
849

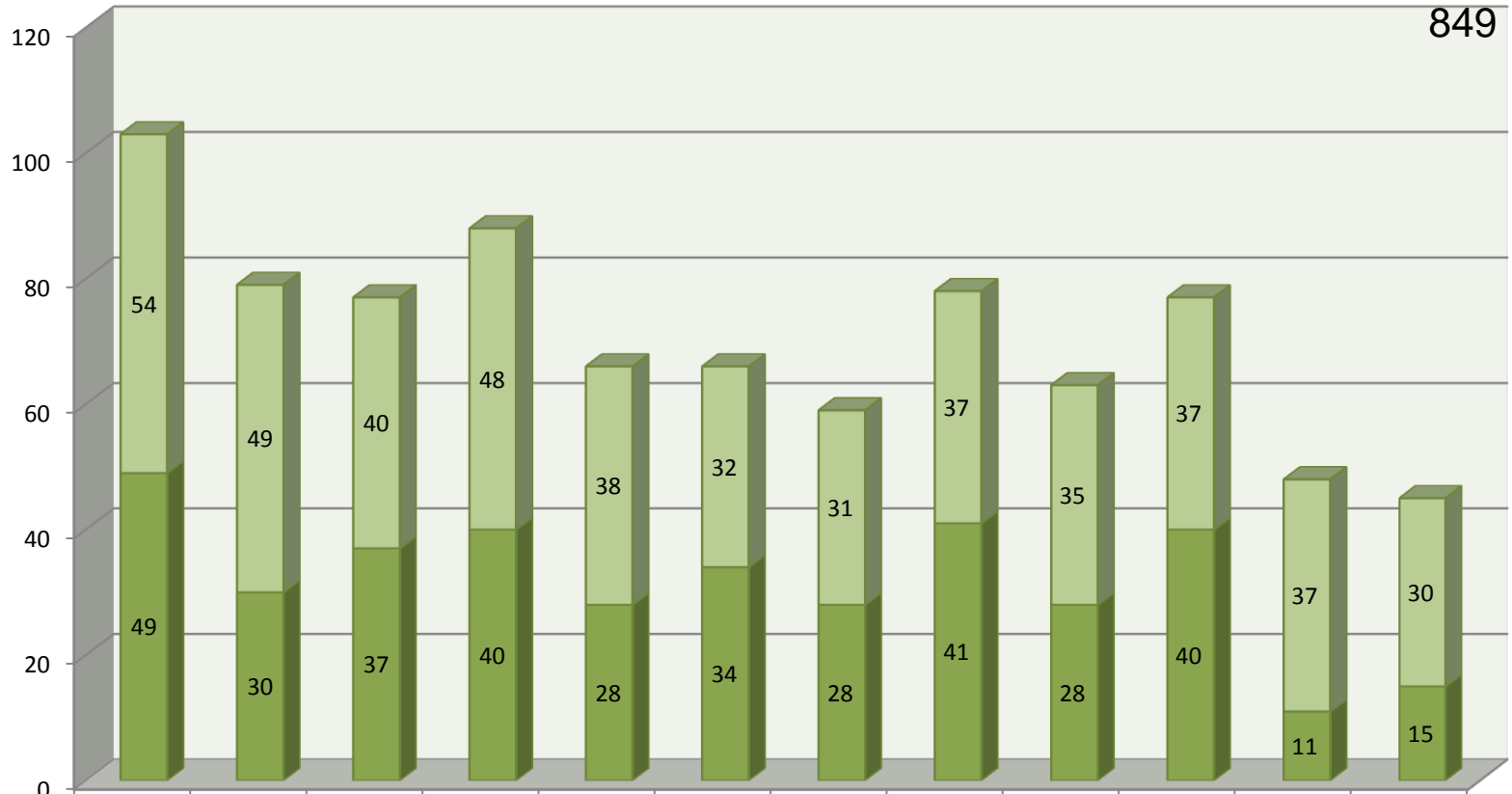


City of Cypress Police Department Total Arrests By Month, 2014 (Felony & Misdemeanor)

Felony Arrests
-12% Yr-to-Yr Trend
+27% Five Year Trend

Misdemeanor Arrests
-25% Yr-to-Yr Trend
-28% Five Year Trend

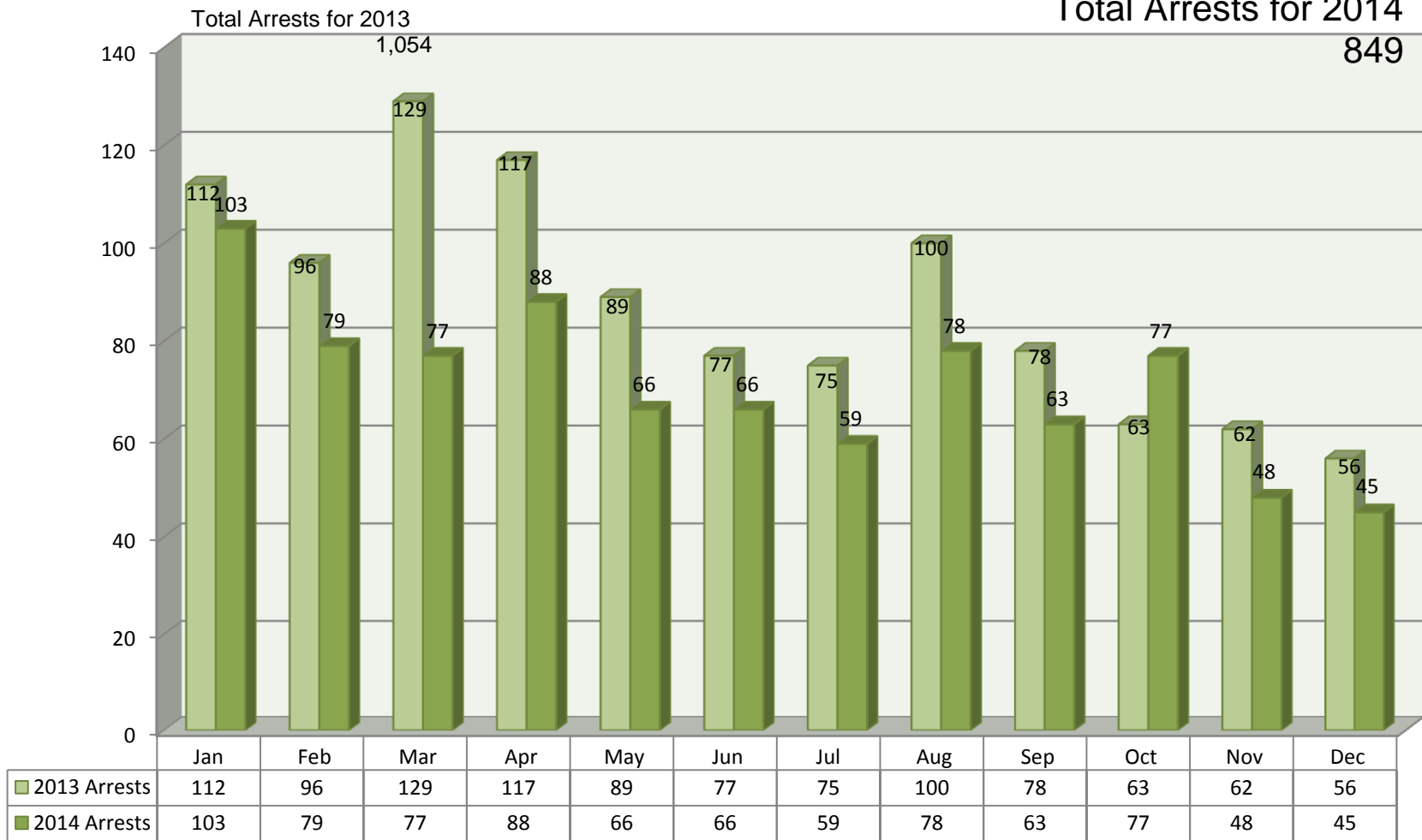
Total Arrests by Month



| | Jan | Feb | Mar | Apr | May | Jun | Jul | Aug | Sep | Oct | Nov | Dec |
|-------------|-----|-----|-----|-----|-----|-----|-----|-----|-----|-----|-----|-----|
| Misdemeanor | 54 | 49 | 40 | 48 | 38 | 32 | 31 | 37 | 35 | 37 | 37 | 30 |
| Felony | 49 | 30 | 37 | 40 | 28 | 34 | 28 | 41 | 28 | 40 | 11 | 15 |

City of Cypress Police Department Total Arrests By Month, 2014 (Year to Year Comparison)

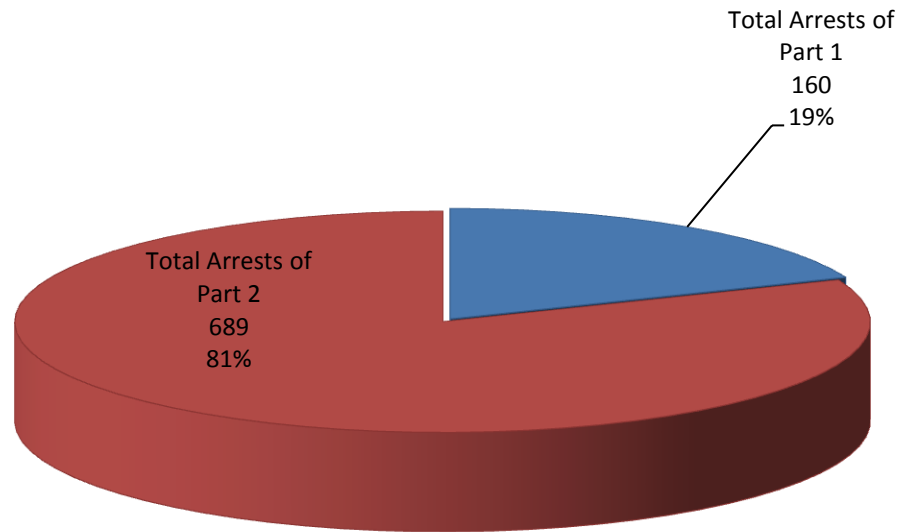
-19% Yr-to-Yr Trend
-11% Five Year Trend



City of Cypress Police Department Total Arrests By Classification, 2014 (Part 1 & 2 Crimes)

Part 1 Crimes
Murder
Rape
Robbery
Assault & Battery
Burglary
Larceny (Theft)
Auto Theft
Arson

Part 2 Crimes
All other crimes.



Total Arrests for 2014
849

City of Cypress Police Department Total Prisoners Booked, 2014 (Cypress Jail | Orange County Jail)

