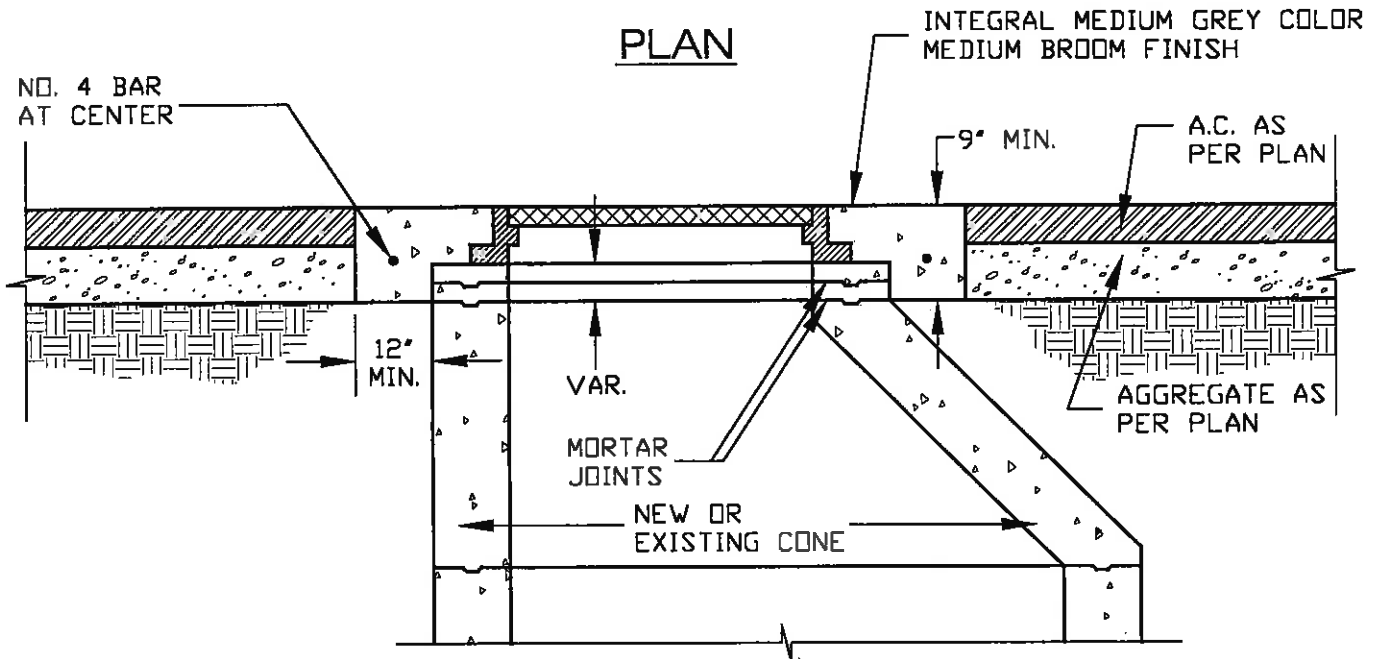


PLAN



CROSS SECTION

NOTES:

1. ALL AGGREGATE BASE REMOVED SHALL BE REPLACED WITH 560-C-3250 CONCRETE.
2. CONCRETE MAY BE CIRCULAR IN SHAPE WITH A MINIMUM OF 12" BETWEEN EDGE OF CONCRETE AND OUTSIDE WALL OF MANHOLE.

△		
△		
Rev.	Approved	Date

**CITY OF CYPRESS**

DEPARTMENT OF PUBLIC WORKS  
ENGINEERING DIVISION

**STANDARD FOR  
MANHOLE ADJUSTMENTS**

APR. *[Signature]* 12/13/93  
Director of Public Works Date

STD. PLAN NO. **314**